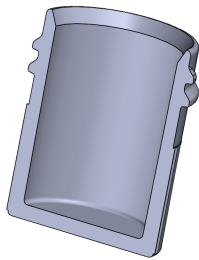
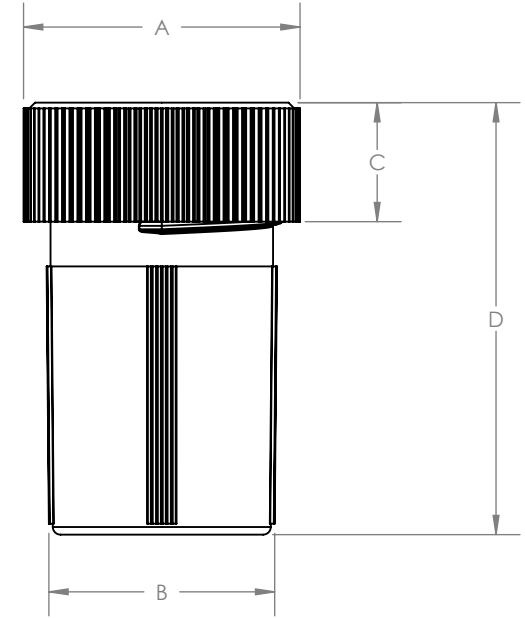


## STANDARD DIMENSIONS

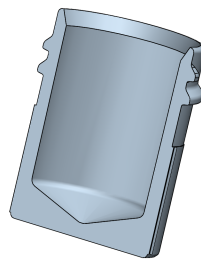
| PART NUMBER | *PSI RATING<br>73°F/23°C | VOLUME | A<br>INCHES (MM) | B<br>INCHES (MM) | C<br>INCHES (MM) | D<br>INCHES (MM) |
|-------------|--------------------------|--------|------------------|------------------|------------------|------------------|
| 200-003-12  | 60 PSI                   | 3 mL   | 0.96" (24.4)     | 0.68" (17.3)     | 0.40" (10.2)     | 1.04" (26.4)     |
| 200-003-20  | 60 PSI                   | 3 mL   | 0.96" (24.4)     | 0.68" (17.3)     | 0.40" (10.2)     | 1.04" (26.4)     |
| 200-003-30  | 60 PSI                   | 3 mL   | 0.96" (24.4)     | 0.68" (17.3)     | 0.40" (10.2)     | 1.04" (26.4)     |
| 200-005-12  | 25 PSI                   | 5 mL   | 1.08" (27.4)     | 0.87" (22.1)     | 0.54" (13.7)     | 1.31" (33.3)     |
| 200-005-20  | 25 PSI                   | 5 mL   | 1.08" (27.4)     | 0.87" (22.1)     | 0.54" (13.7)     | 1.31" (33.3)     |
| 200-005-30  | 25 PSI                   | 5 mL   | 1.08" (27.4)     | 0.87" (22.1)     | 0.54" (13.7)     | 1.31" (33.3)     |
| 200-005-32  | 25 PSI                   | 5 mL   | 1.08" (27.4)     | 0.84" (21.7)     | 0.54" (13.7)     | 1.42" (36.1)     |
| 200-006-20  | 60 PSI                   | 6 mL   | 0.94" (23.9)     | 0.70" (17.8)     | 0.40" (10.2)     | 1.83" (46.5)     |
| 200-007-10  | 25 PSI                   | 7 mL   | 1.08" (27.4)     | 0.87" (22.1)     | 0.54" (13.7)     | 1.46" (37.1)     |
| 200-007-20  | 25 PSI                   | 7 mL   | 1.08" (27.4)     | 0.87" (22.1)     | 0.54" (13.7)     | 1.46" (37.1)     |
| 200-007-30  | 25 PSI                   | 7 mL   | 1.08" (27.4)     | 0.87" (22.1)     | 0.54" (13.7)     | 1.46" (37.1)     |
| 200-015-12  | 10 PSI                   | 15 mL  | 1.44" (36.6)     | 1.20" (30.5)     | 0.62" (15.7)     | 1.62" (41.1)     |
| 200-015-20  | 10 PSI                   | 15 mL  | 1.44" (36.6)     | 1.20" (30.5)     | 0.62" (15.7)     | 1.63" (41.4)     |
| 200-015-30  | 10 PSI                   | 15 mL  | 1.44" (36.6)     | 1.20" (30.5)     | 0.62" (15.7)     | 1.63" (41.4)     |
| 200-022-12  | 10 PSI                   | 22 mL  | 1.44" (36.6)     | 1.20" (30.5)     | 0.62" (15.7)     | 2.19" (55.6)     |
| 200-022-20  | 10 PSI                   | 22 mL  | 1.44" (36.3)     | 1.20" (30.5)     | 0.62" (15.7)     | 2.21" (56.1)     |
| 200-022-30  | 10 PSI                   | 22 mL  | 1.44" (36.3)     | 1.20" (30.5)     | 0.62" (15.7)     | 2.19" (55.6)     |
| 200-030-12  | 10 PSI                   | 30 mL  | 1.44" (36.3)     | 1.20" (30.5)     | 0.62" (15.7)     | 2.75" (69.9)     |
| 200-030-20  | 10 PSI                   | 30 mL  | 1.44" (36.6)     | 1.20" (30.5)     | 0.62" (15.7)     | 2.76" (70.1)     |
| 200-030-30  | 10 PSI                   | 30 mL  | 1.44" (36.6)     | 1.20" (30.5)     | 0.62" (15.7)     | 3.11" (79.0)     |
| 200-060-12  | 10 PSI                   | 60 mL  | 1.44" (36.6)     | 1.21" (30.7)     | 0.62" (15.7)     | 5.27" (133.9)    |
| 200-060-20  | 10 PSI                   | 60 mL  | 1.44" (36.3)     | 1.21" (30.7)     | 0.62" (15.7)     | 5.20" (132.1)    |
| 200-060-30  | 10 PSI                   | 60 mL  | 1.44" (36.3)     | 1.21" (30.7)     | 0.62" (15.7)     | 5.20" (132.1)    |

**\*NOTE: CONSULT SAVILLEX FOR ELEVATED TEMPERATURE RATINGS**

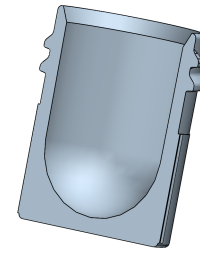
**\*NOTE: VIAL IS SHOWN WITH SAVILLEX CLOSURE FOR REFERENCE**



FLAT INTERIOR



CONICAL INTERIOR



ROUNDED INTERIOR



TITLE: **STANDARD VIAL  
DIMENSIONS**