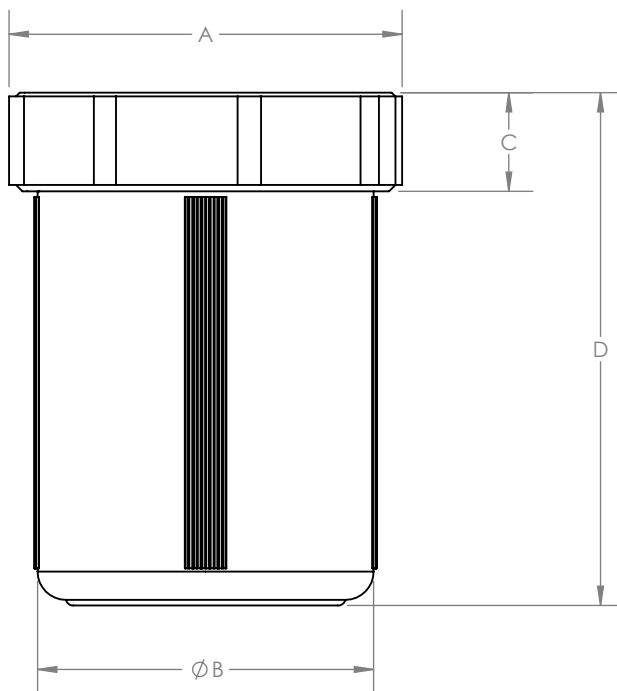


STANDARD DIMENSIONS

PART NUMBER	*PSI RATING 73°F/23°C		VOLUME	A	B	C	D
	LIQUID	GAS		INCHES (MM)	INCHES (MM)	INCHES (MM)	INCHES (MM)
171-01-0060-01	10 PSI	10 PSI	60 ml	2.46" (62.5)	1.99" (50.5)	0.75" (19.1)	2.01" (51.1)
171-01-0060-01-A	10 PSI	10 PSI	60 ml	2.46" (62.5)	1.99" (50.5)	0.75" (19.1)	2.01" (51.1)
171-01-0120-01	5 PSI	3 PSI	120 ml	3.15" (80.0)	2.61" (66.3)	0.77" (19.6)	2.24" (56.9)
171-01-0120-01-A	5 PSI	3 PSI	120 ml	3.15" (80.0)	2.61" (66.3)	0.77" (19.6)	2.24" (56.9)
171-01-0240-01	5 PSI	3 PSI	240 ml	3.15" (80.0)	2.59" (66.8)	0.77" (19.6)	3.76" (95.5)
171-01-0240-01-A	5 PSI	3 PSI	240 ml	3.15" (80.0)	2.59" (66.8)	0.77" (19.6)	3.76" (95.5)

***NOTE: CONSULT SAVILLEX FOR ELEVATED TEMPERATURE RATINGS**

***NOTE: JAR IS SHOWN WITH SAVILLEX CLOSURE FOR REFERENCE**



TITLE:

Purillex™ Jar Dimensions

REV.
A